

# CPS-M1-S



## Performance features

- » Variable modular technology for complex position requirements
- » Tested and certified in accordance with EN 12101-10, developed in accordance with ISO 21927-9
- » Flexible system design thanks to the supporting rail assembly for all modules and additions
- » Supply connection and communication using integrated plug connectors
- » Components can be retrofitted in case of building modifications
- » Configurable SHEV and ventilation functions using D+H software SCS
- » 2x max. 10 A drive current for each actuator module
- » Connection of max. 2 SHEV operation panels per control panel
- » AdComNet bus system for seamless networking of the modules within the CPS-M and further D+H AdComNet components
- » Flexible use of configurable, digital inputs and outputs
- » Stabilized output voltage thanks to power pack technology

## Accessories

Batteries



Module sets



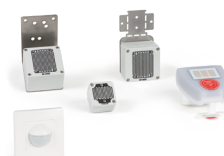
SHEV operation panels



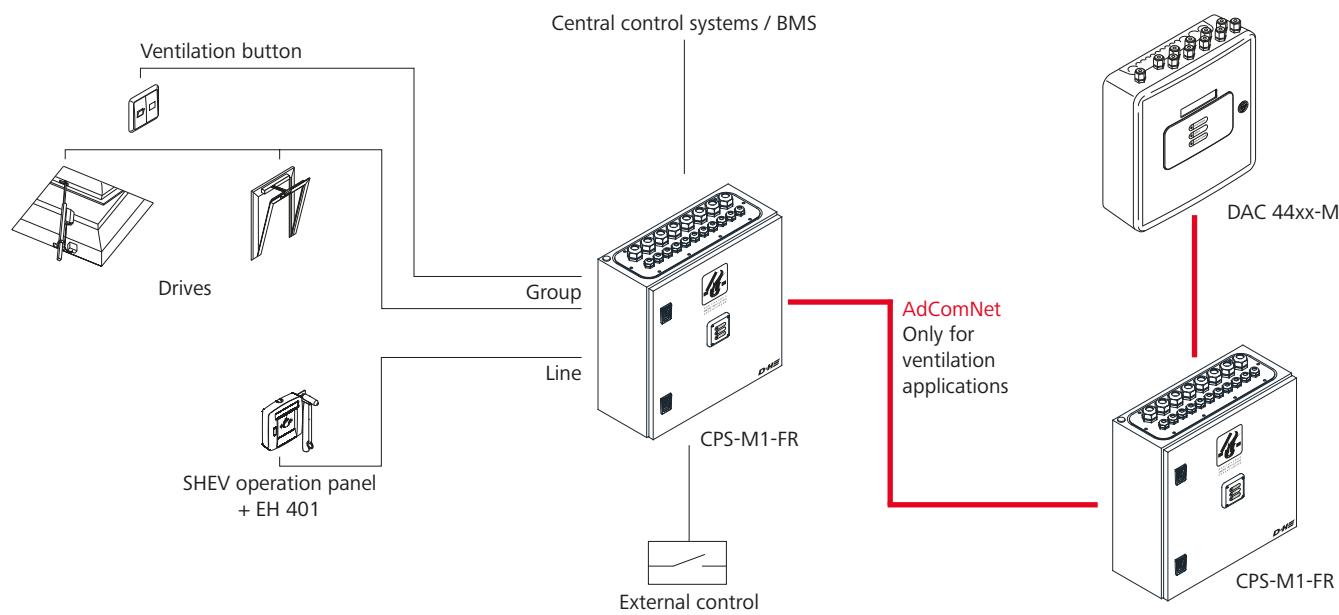
Alarm devices



Sensor systems



# Example of application



## Technical data

	CPS-M1-S
Supply	230 V AC / 50 Hz
Output	24 V DC
Ripple	< 50 mVss
Mode of operation monitoring	Pulse operation
Mode of operation Alarm / Ventilation	Short-time duty 30 % duty cycle
Type of protection	IP 54
Temperature range	-5 °C ... +40 °C
Housing	Steel sheet

Batteries must be ordered separately.

## Approvals / Certificates

Article also available with the following permissions under other article numbers. Technical data may deviate. Find out about permission details from your D+H Partner.



**NOTICE:**  
CPS-M1-FR in the NF release process!



## Design

Type	Art. No.	Remark
CPS-M1-S	31.700.00	Variable equipment possible