

BAZ 2 fire door control panel



FSA 94008



Z-6.5-1488

Find out about permission details from your D+H Partner

Performance features

- » For controlling locking mechanisms for fire doors and sliding doors
- » Activation possible through central fire alarm
- » Operation directly on the device or via remote triggering
- » Manual trip occurs via recessed button UT 4U
- » With isolated alarm contact
- » With additional reset function
- » Display: Operational standby and triggering
- » Connection of up to 14 fire detectors
- » Only use fire detectors and locking mechanisms listed in the respective IfB approval

Accessories

Operation elements



Sensor systems



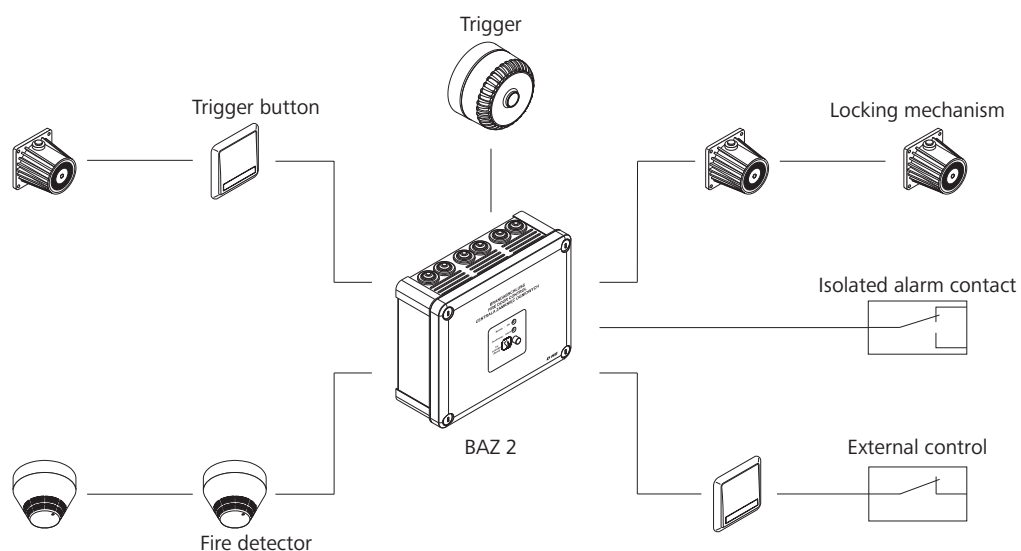
Alarm devices



Magnets



Example of application



Technical data

Supply	230 V AC / 50 Hz / 80 VA
Output	24 V DC / max. 2 A
Switching contact	Floating change-over contact
Alarm contact	Max. 230 V AC / 6 A
Type of protection	IP 20
Temperature range	-5 °C ... +40 °C
Housing	Polycarbonate
Colour	Light grey (~ RAL 7035)
W x H x (D) in mm	220 x 170 x 90
Weight	2.25 kg

Design

Type	Art. No.
BAZ 2	31.101.30